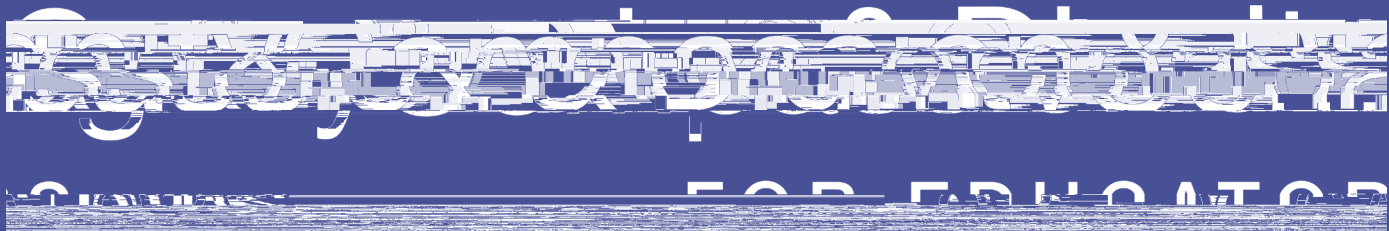
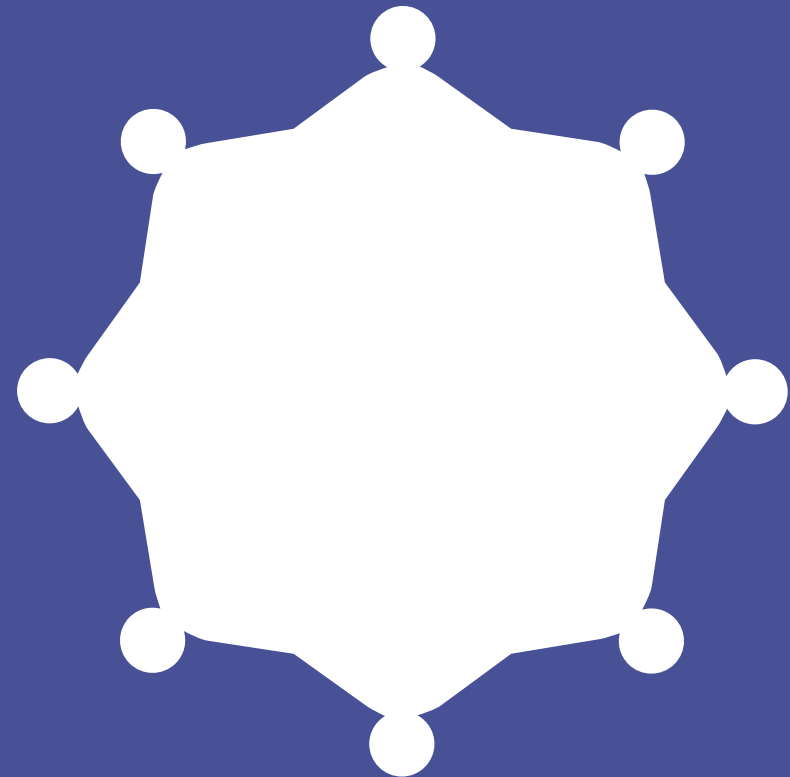
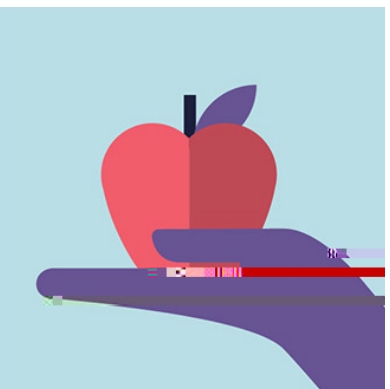
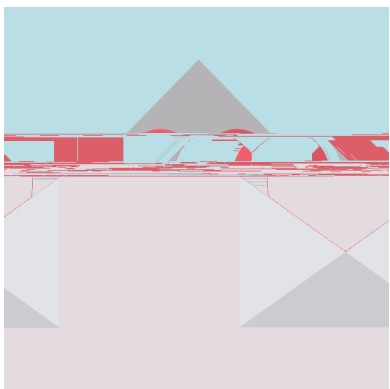
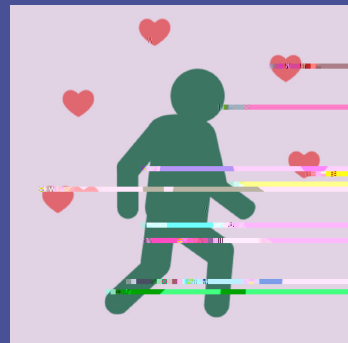


Coming Back to School with Kindness

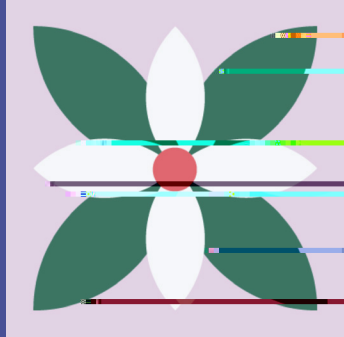




Being Kind

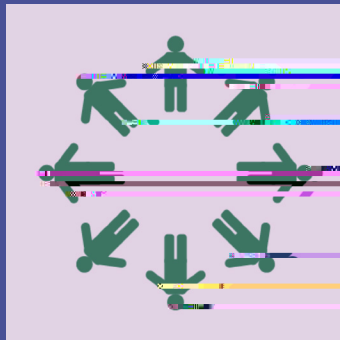
A large, light-colored rectangular area with a decorative background. It features a large, faint green silhouette of a person with a cane walking to the right. There are several pink hearts scattered throughout. The background is filled with horizontal lines in various colors (pink, yellow, green, blue, purple). On the left side, there are three blue checkmarks in circles, each followed by a vertical line of dots (green, red, green).

● May we have patience and kindness for one another and ourselves during dif cult times.



Being Kind to





Being Kind to

-
-
-
- ✓
- ✓
 - May our work together benefit students, families, and educators.
 -
 - May the benefit of our work radiate out and connect to those who need it.
 -
- ✓
 -
 -
 -